

PETERBOROUGH UNITED EVENTS



EVENT SPACES

PETERBOROUGH UNITED EVENTS

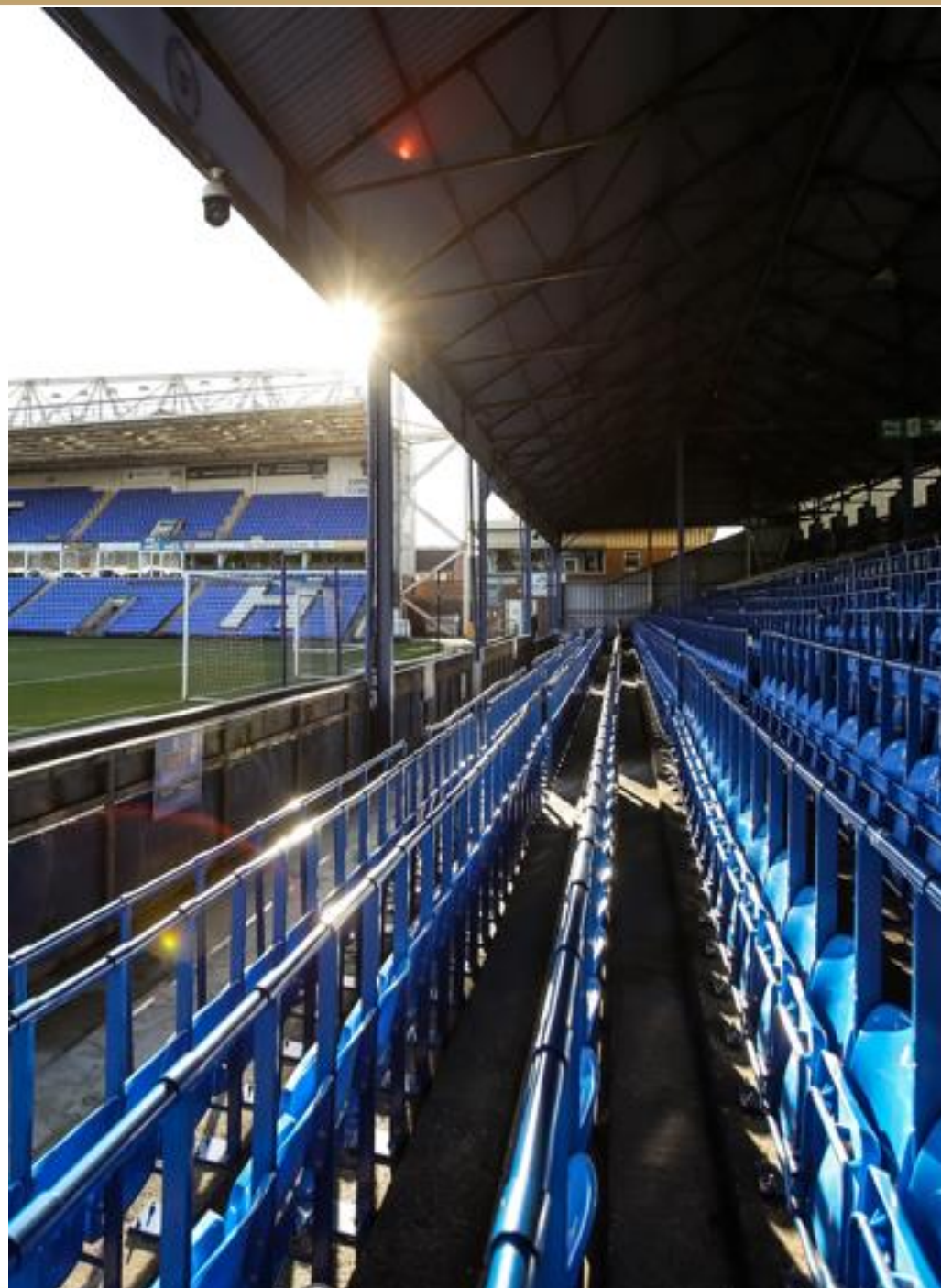
WELCOME TO WESTON HOMES STADIUM

Home to Peterborough United Football Club and one of the city's most memorable venues. The Weston Homes Stadium is the perfect place for your meeting, exhibition, dinner, or celebration event.

Our obsession with craft, creativity and community drives everything we do, because we believe that amazing food, drink, and service sit at the heart of every guest experience and that when those three elements come together, something very special happens.

We hope to see you at the Weston Homes Stadium soon.

Please get in touch if there's anything we can help with – we'd be delighted to hear from you!



ROOM CAPACITY & DIMENSIONS

Event Space	Banquet	Board Room	Cabaret	Theatre	U-Shape	Width	Length	Height
Boardroom	20	15	12	N/A	N/A	3.0m	7.0m	2.2m
David Seaman Suite	40	20	24	30	16	4.2m	8.0m	2.2m
Executive Box	10	10	N/A	N/A	N/A	4.0m	3.4m	2.3m
Executive Suite	180	40	108	150	30	6.5m / 9.7m	15.5m / 23.0m	2.3m
Noel Cantwell Suite	80	20	48	70	16	4.6m	18.6m	2.4m
Sponsors Lounge	70	20	42	60	16	8.8m	14.3m	2.2m

A photograph of a boardroom. In the foreground, several rows of black leather chairs with horizontal stitching are visible, receding into the background. On the wall in the background, there is a large, circular blue and white crest or seal. The text "BOARDROOM" is overlaid in the center of the image in a bold, black, sans-serif font.

BOARDROOM

BOARDROOM

KEY FEATURES:

Air Conditioning | Natural Daylight | TV Screen |

ROOM CAPACITY

Banquet	Boardroom	Cabaret	Theatre	U-Shape
20	15	12	N/A	N/A

Located on the first floor of the Weston Homes Stadium and refurbished in 2025, the Boardroom is a modern and professional meeting space for up to 20 guests.

DIMENSIONS

Width	Length	Height
3.0m	7.0m	2.2m



A blurred photograph of a room, likely a waiting area or a lounge. In the foreground, there are several blue chairs with a perforated backrest. In the background, there is a large window showing a blue sky, and a framed picture hangs on the wall. The image is framed by a dark blue border.

DAVID SEAMAN SUITE

DAVID SEAMAN SUITE

KEY FEATURES:

Air Conditioning | Bar Facilities | Natural Daylight | TV Screen |

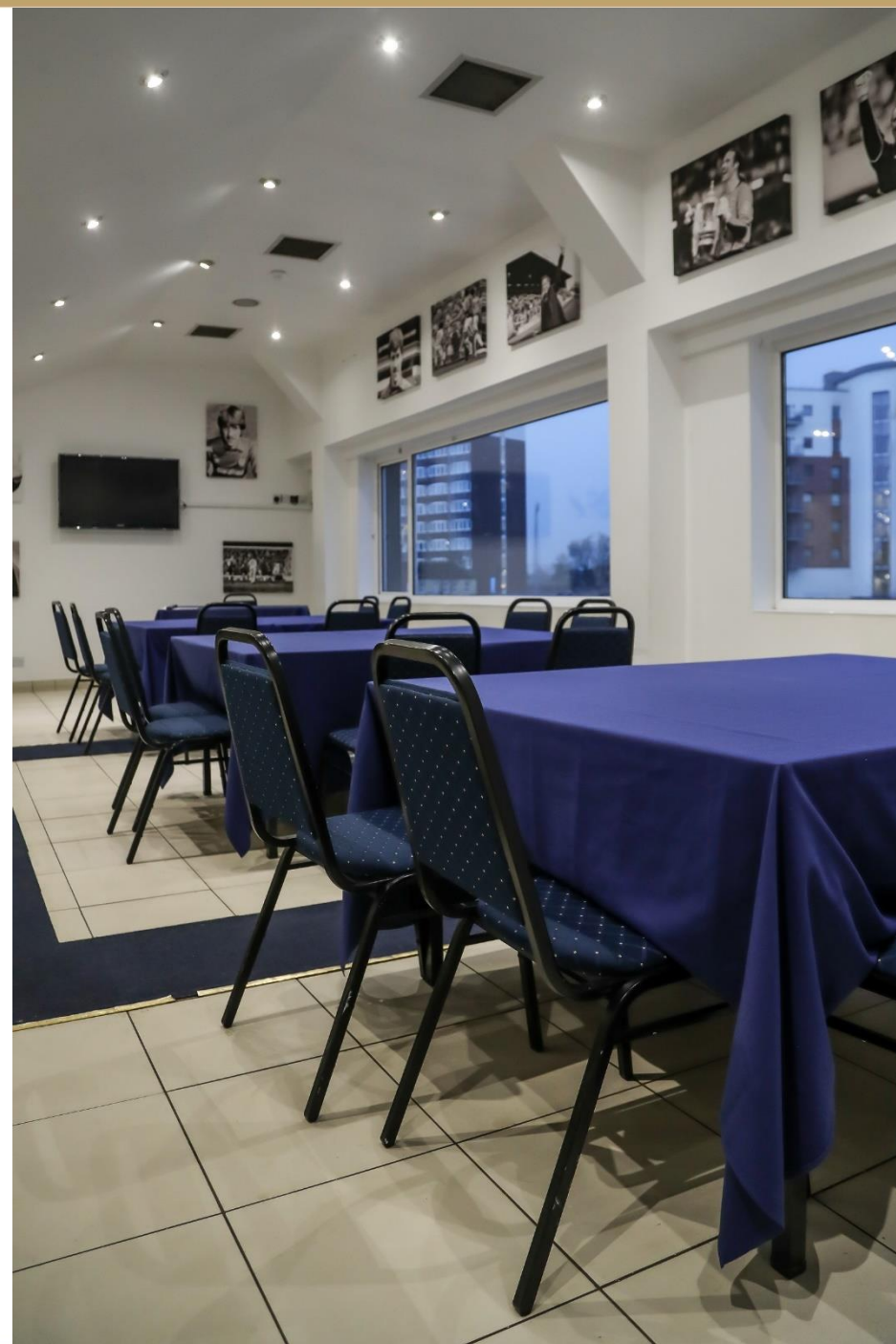
ROOM CAPACITY

Banquet	Boardroom	Cabaret	Theatre	U-Shape
40	20	24	30	16

Located on the first floor of the Weston Homes Stadium the David Seaman Suite is a great space for informal celebration events up to 50 guests.

DIMENSIONS

Width	Length	Height
4.2m	8.0m	2.2m





EXECUTIVE BOX

EXECUTIVE BOX

KEY FEATURES:

Air Conditioning | Natural Daylight | Pitch View | TV screen |

ROOM CAPACITY

Banquet	Boardroom	Cabaret	Theatre	U-Shape
10	10	N/A	N/A	N/A

Located in the South Stand, our Executive Boxes are ideal for small meetings. Their proximity to the Noel Cantwell Suite also makes them perfect for breakout spaces.

DIMENSIONS

Width	Length	Height
4.0m	3.4m	2.3m



A man with grey hair, wearing a grey suit and a watch, is speaking into a microphone. He has his right hand raised in a gesture. He is standing in front of a window with horizontal blinds. The scene is captured from a low angle, looking up at him. The background is slightly blurred, showing the window blinds and some out-of-focus figures of people in the foreground.

EXECUTIVE SUITE

EXECUTIVE SUITE

KEY FEATURES:

Air Conditioning | Bar Facilities | Natural Daylight | TV screen |

ROOM CAPACITY

Banquet	Boardroom	Cabaret	Theatre	U-Shape
180	40	108	150	30

The Executive Suite is our largest event space and can host up to 160 guests. With a large bar it's the perfect place for parties, awards dinners and charity banquets.

DIMENSIONS

Width	Length	Height
6.5m / 9.7m	15.5m/ 23m	2.3m





NOEL CANTWELL SUITE

NOEL CANTWELL SUITE

KEY FEATURES:

Air Conditioning | Bar Facilities | Natural Daylight | Pitch View |

ROOM CAPACITY

Banquet	Boardroom	Cabaret	Theatre	U-Shape
80	20	48	70	16

Located in the South Stand with amazing pitch views the Noel Cantwell Suite is a versatile meeting and dining space for up to 150 guests and benefits from proximity to our Executive Boxes for breakout spaces.

DIMENSIONS

Width	Length	Height
4.6m	18.6m	2.4m





SPONSORS LOUNGE

SPONSORS LOUNGE

KEY FEATURES:

Air Conditioning | Bar Facilities | TV Screen |

ROOM CAPACITY

Banquet	Boardroom	Cabaret	Theatre	U-Shape
70	20	42	60	16

Adjacent to the Boardroom, the Sponsors Lounge is great event space for meetings for up to 60 guests.

DIMENSIONS

Width	Length	Height
8.8m	14.3m	2.2m



The banner features a background image of a football stadium at dusk. A goalpost is visible on the left, and a large rainbow arches across the sky above the stands. The text 'PETERBOROUGH UNITED' is in white, and 'EVENTS' is in gold, both enclosed in a gold rectangular frame.

PETERBOROUGH UNITED EVENTS

FOR MORE INFORMATION

01733 563947 option 6 | peterboroughevents@gatherandgather.com | peterborough-events.com